



CEDS includes information about staff professional development from multiple perspectives. CEDS separates the concepts of professional development activities (e.g., workshops, courses, or mentoring activities); the scheduling of activities (e.g., workshop time and location); a staff member’s registration for and participation in activities; the results of a person’s participation in an activity (e.g., course completion and professional development credit); and a person’s professional development plan goals or requirements.

CEDS CONNECTIONS may be used to show how CEDS elements defined at the unit level may be aggregated for summary reporting. For example, the unit-level data elements defined in CEDS may be aggregated for metrics to report the number or percentage of staff fulfilling annual professional development requirements, or the number of staff participating in professional development activities.

Scope

The professional development data vocabulary is organized based on the following entities:

Professional Development Activity—Information about an activity designed for the purpose of developing someone professionally.

- The *Professional Development Activity* may be related to one or more *Learning Resources*, the CEDS entity that includes information about materials that support teaching and learning.
- The *Professional Development Activity* may be associated with a *Course* (i.e., a postsecondary or adult education course).
- The *Professional Development Activity* may be *scheduled* as one or more *Professional Development Session(s)* that may occur over multiple days.

Professional Development Session—Information about part or all of a *Professional Development Activity* scheduled for delivery within a single day.

- The *Professional Development Session* has details about one scheduled meeting of a class or seminar that is scheduled for the *Professional Development Activity*.
- The *Professional Development Session* may be related to one or more *Learning Resources*.

Staff Professional Development Activity—Information about a person's participation in a *Professional Development Activity* and the outcomes from that participation.

- The *Staff Professional Development Activity* may be related to a *Professional Development Requirement*.

- The *Staff Professional Development Activity* represents a person's participation in a *Professional Development Activity*. The CEDS logical model also provides a relationship between the *Staff Professional Development Activity* and the *Professional Development Session* (a scheduled part of an activity) for uses that require more detail.

Professional Development Requirement—Information about a requirement that a person participate in professional development related to a specific professional role or assignment.

CONNECTIONs

The following CEDS Connections are available:

Connection	URL
Professional Development Elements in CEDS	https://ceds.ed.gov/connectReport.aspx?uid=507

(Other CONNECTIONs may be developed from time to time. Please check <http://ceds.ed.gov>.)

Logical Model

CEDS provides a logical model showing the relationships between data entities and elements as they might exist in an operational data store. The following diagram is a subset of that model showing professional development entities:

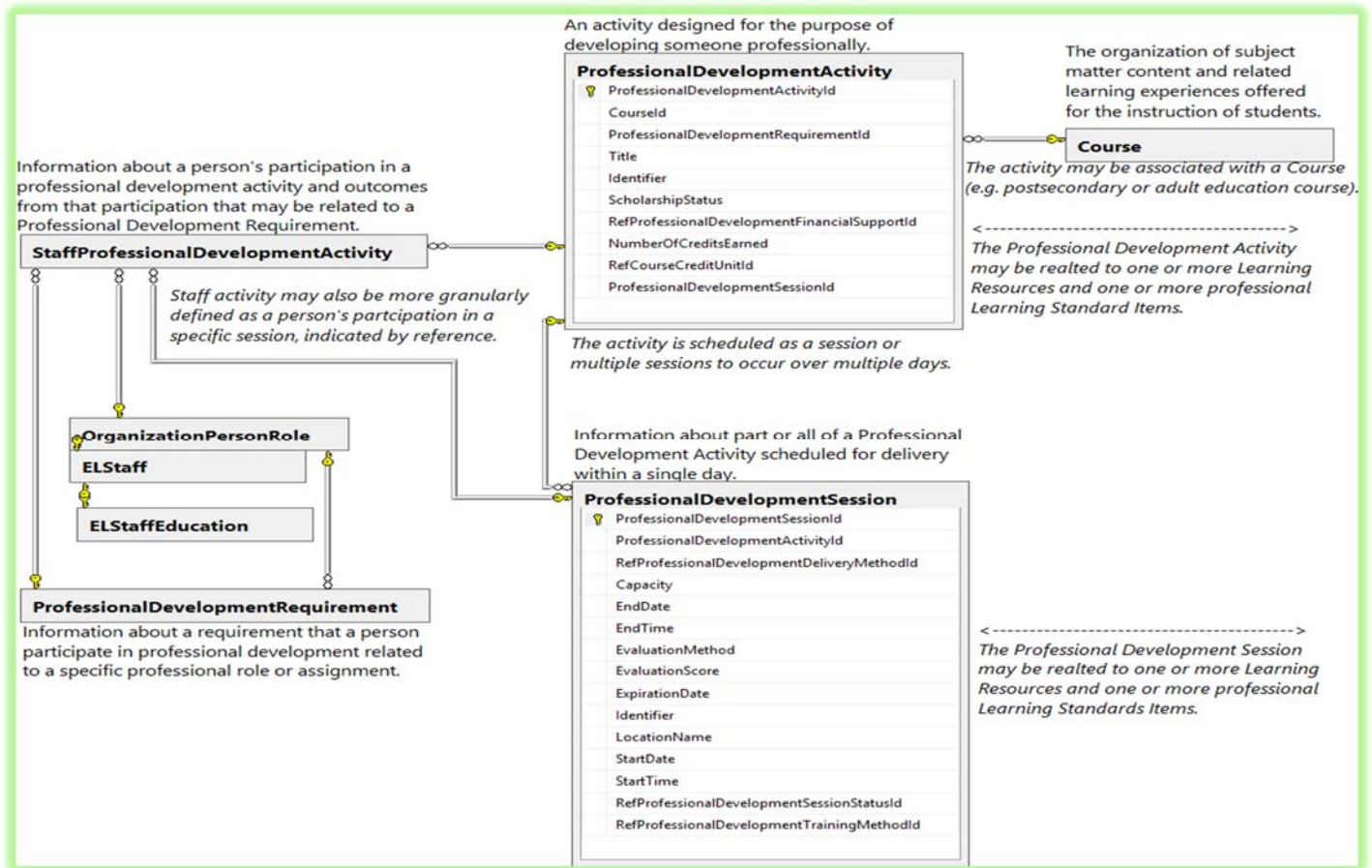


Figure 1 | CEDS logical model

Note: CEDS also has defined data vocabulary applicable to competency-based professional development models.